

Surveillance Van Antenna Network

SVAN

INSTALLATION INSTRUCTIONS

PARTS LIST:

Surveillance Van Antenna Network (SVAN) may have a multitude of antennas within the tube, however the mounting instructions will be the same for all combinations.

Included in the kit are: 10-foot contractors tube, (2 ea.) ½” threaded “U” bolts, (2 ea.) flat washers, and (2 ea.) ½” hex nuts (refer to Figure 1- Parts Diagram).

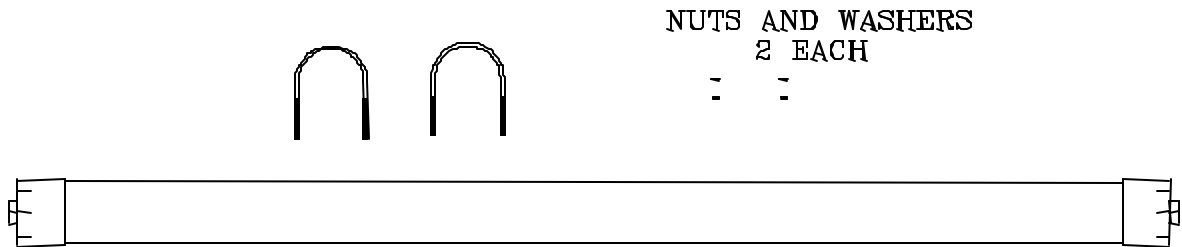


Figure 1- Parts Diagram

DETERMINE LOCATION:

Locate the exit hole where the RF cable(s) exit the tube. The cables can either run along the van rack or within depending if the inside diameter of the rack will support the RF cables. Refer to Figure 2 – RF Cable.

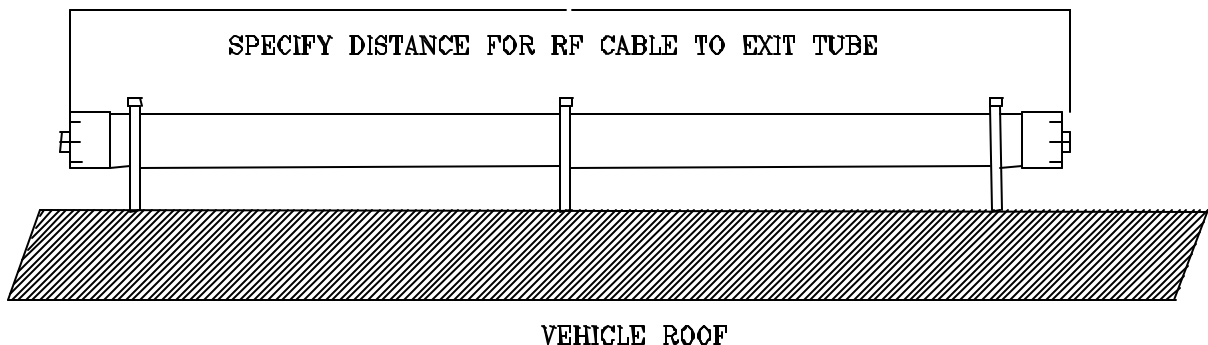


Figure 2 – RF Cables

MOUNTING PROCEDURE:

Once the tube is in place on the van rack, use the supplied "U" bolt to mark the rack where the 9/16" holes are to be drilled. Once the holes are marked and drilled, secure with flat washers and hex nuts (supplied). See Figure 3.

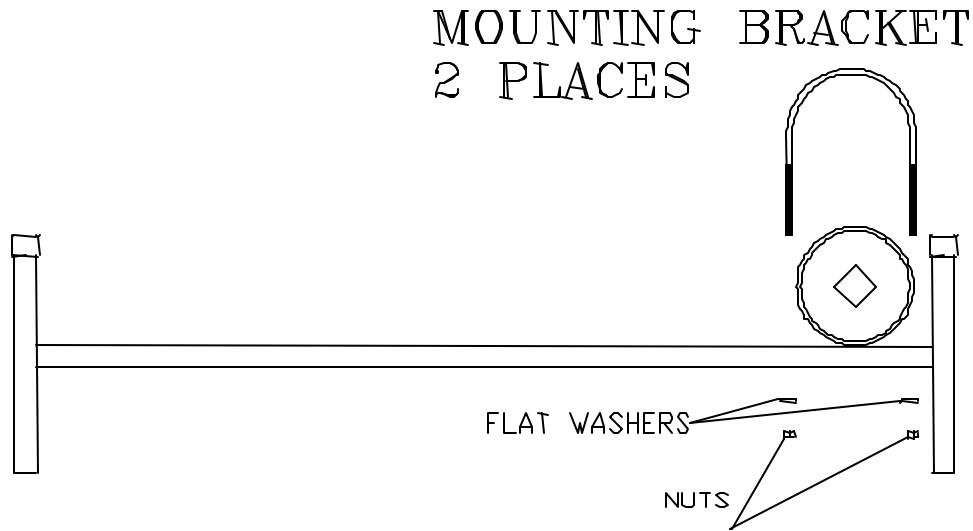


Figure 3 – Mounting Procedure